



# CHIARA



**Dog Sweater --- Tuxedo style with Medium front  
and Medium sleeves  
Rolled Edge collar**

**Printed: 09.11.2012**

**Pattern File Name: French Bulldog 2  
Size: M**

## **YARN DESCRIPTION:**

\*Petek; \*white , red, black; \*acrylic; \*40 'C

## **GAUGE DATA:**

Gauge (Stocking Stitch over 4 in = 10 cm): 27,0 sts by 25,0 rows.

Body knit by hand on 4 mm needles

Ribbing knit by hand on 3 mm needles

## **FINISHED DIMENSIONS: (cms): ... with Tight fit.**

Chest: 50,0	Neck Width: 33,0	Armhole: 25,0
Bottom Width: 20,8	Collar Length: 5,0	Sleeve Length: 5,0
Back Length: 35,0		Slv Rib Length: 1,0
Front Length: 24,2		
Back Rib Length: 2,0		

*Note: Read ALL these instructions thoroughly BEFORE starting to knit.*

**AT THE SAME TIME WORK THE GIVEN PATTERN / SCHEME**

## **BODY:**

--- *Turtle neck.*

1. Collar. Cast on 91 sts on size 3 needles. Work 2 rows in K2P2 ribbing. Then work in Stocking Stitch for 5,0 cms (approx. 16 rows).
2. Inc 18 sts evenly across the last row. Total 109 sts. Change to size 4 needles.
3. Work 2 rows in Stocking Stitch. Inc 1 st at each end on next and every following row 13 times more, to total 137 sts. Work even until piece measures (from collar, at center back) 9,1 cms (24 rows).
4. Armholes (leg openings). Work 15 sts, place next 11 sts on a holder. With a second ball of yarn work 84 sts, place next 11 sts on a holder. With a third ball of yarn work to end. Work these three sections for the leg openings at the same time for 8,3 cms (22 rows), ending on a purl row.
5. Next row, to close the leg openings. Work with first ball of yarn only. Work across first section, cast on 11 sts, work middle section, cast on 11 sts, then work to end.
6. Work even for 5,9 cms (13 rows more). Total length from collar (along the front seam) is 24,2 cms.
7. Back Shaping. Transfer 16 sts to a holder at the beginning of the next two rows. Work two rows even. Decrease 1 st at each end of next and every following row 23 times more until 57 sts remain. Work even until work measures 35,0 cms, not including collar. Cut yarn. Place remaining sts on a holder.

## **BOTTOM HEM:**

1. Sew center front seam from top of collar to beginning of back shaping.

2. With right side facing and using size 3 circular needle, start at center front seam. Pick up and work 16 sts from the front edge holder, 30 sts along the back shaping, 57 end sts from the holder, 30 sts along the back shaping, and 16 sts from the front edge holder. Total 149 sts.
3. Work in K2P2 ribbing for 2,0 cms (approx. 4 rows).
4. Cast off loosely in ribbing.

**SLEEVES:**

1. With the right side of the work facing you, using size 4 circular needle (or a set of double pointed), pick up 46 sts evenly spaced around the four sides of the armhole.
2. Work in Stocking Stitch for 4,0 cms (approx. 10 rows). Change to size 3 circular needle.
3. Work in K2P2 ribbing for 1,0 cms (approx. 4 rows).
4. Cast off loosely in ribbing.
5. Work second sleeve as for first.

**FINISHING:**

1. Rolled edge collar can be left loose, or rolled down and tacked in place.
2. Optional. To keep the back end of the sweater in place, attach a piece of elastic, stretchy knitted cord or a thin knitted band (approx. 25,0 cms long) on each side from the back corner to just in front of the back leg. Adjust as necessary.
3. Sew in all loose ends.

**AMOUNT OF YARN REQUIRED TO MAKE GARMENT:**

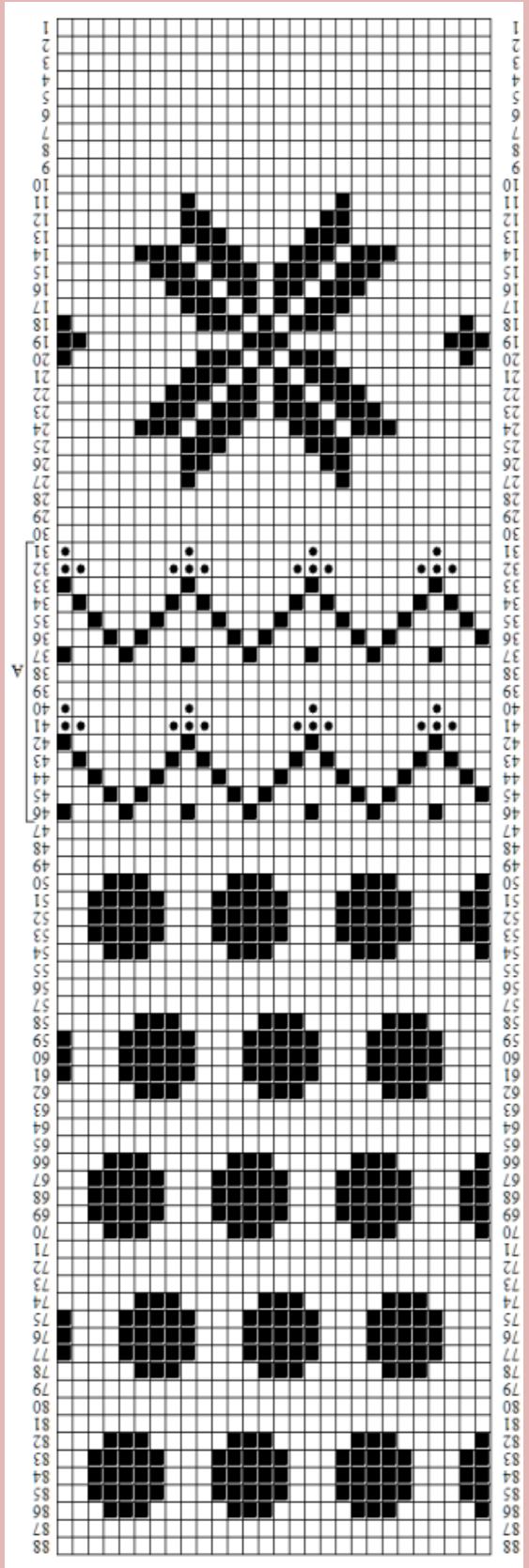
--- WARNING. THIS IS A ROUGH ESTIMATE ONLY. Measure a sample piece for a more accurate calculation.

Amount needed:

129,9 for body

28,6 for ribbing (and collar)

**158,5 Grams TOTAL**



Pattern designed by: Zlata